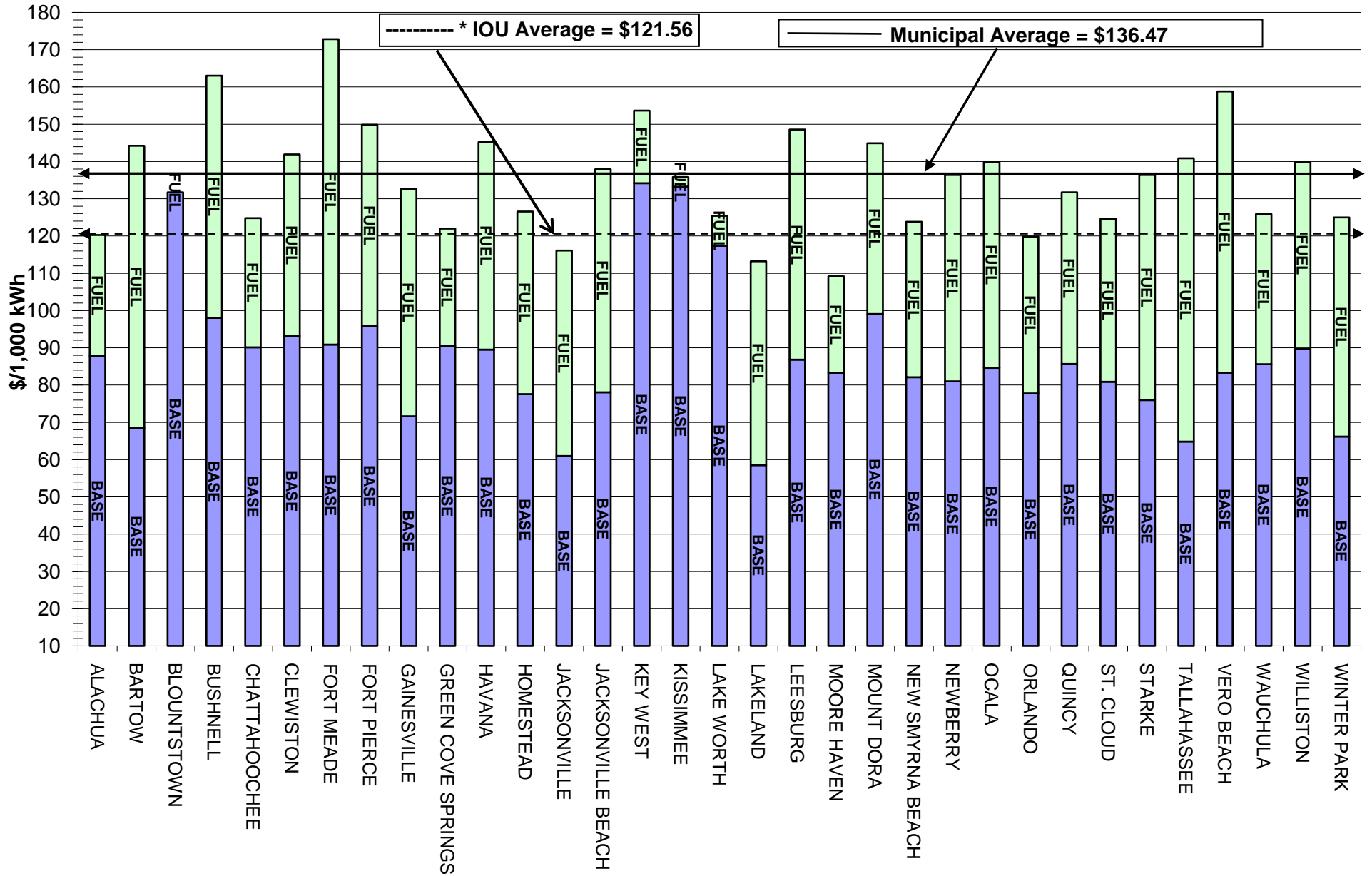


Residential Bill Comparison, August 2009



* Includes average 6% franchise fee.

COMPARISON OF RESIDENTIAL ELECTRIC RATES COMPILED BY FLORIDA MUNICIPAL ELECTRIC ASSOCIATION, INC. - www.publicpower.com

August 2009			1,000 KWH			A	2,500 KWH			B	
CITY		Customer Charge	Base Rate (Includes Customer Charge)	Fuel or Cost Adjustment	Total	Total with 6% franchise fee payment*	Base Rate (Includes Customer Charge)	Fuel or Cost Adjustment	Total	Total with 6% franchise fee payment*	Additional Tax
ALACHUA		8.00	87.80	32.50	120.30		207.50	81.25	288.75		10%
BARTOW		6.70	68.52	75.69	144.21		161.25	189.23	350.48		10%
BLOUNTSTOWN		3.50	131.71	0.00	131.71		324.02	0.00	324.02		5%
BUSHNELL	AR	7.40	98.05	65.00	163.05		234.03	162.50	396.53		10%
CHATTAHOOCHEE		6.50	90.10	34.70	124.80		178.00	86.75	264.75		NONE
CLEWISTON	AR	6.50	93.20	48.69	141.89		223.50	121.73	345.23		10%
FORT MEADE	AR	12.96	90.86	82.00	172.86		207.71	205.00	412.71		10%
FORT PIERCE	AR	6.01	95.84	54.00	149.84		242.30	135.00	377.30		10%
GAINESVILLE	G	7.60	71.60	61.00	132.60		218.60	152.50	371.10		10%
GREEN COVE SPRINGS	AR	6.00	90.50	31.49	121.99		221.00	78.73	299.73		NONE
HAVANA	AR	6.00	89.50	55.73	145.23		214.75	139.33	354.08		NONE
HOMESTEAD	G	5.60	77.60	48.95	126.55		185.60	122.38	307.98		10%
JACKSONVILLE	G	5.50	60.97	55.14	116.11		144.18	137.85	282.03		10%
JACKSONVILLE BEACH	AR	4.50	78.07	59.84	137.91		188.43	149.60	338.03		NONE
KEY WEST	G, AR	6.47	134.17	19.50	153.67		325.72	48.75	374.47		NONE
KISSIMMEE	G, AR	10.17	133.27	2.54	135.81		349.55	6.35	355.90		8%
LAKE WORTH	G, AR	8.25	117.40	8.00	125.40		323.50	20.00	343.50		10%
LAKELAND	G	8.00	58.49	54.75	113.24		146.73	136.88	283.61		10%
LEESBURG	AR	10.41	86.83	61.75	148.58		201.46	154.38	355.84		10%
MOORE HAVEN		8.50	83.30	25.90	109.20		195.50	64.75	260.25		10%
MOUNT DORA		8.00	99.10	45.77	144.87		235.74	114.43	350.17		10%
NEW SMYRNA BEACH	G	5.65	82.10	41.70	123.80		196.77	104.25	301.02		9.25%
NEWBERRY	AR	7.50	81.00	55.36	136.36		191.25	138.40	329.65		10%
OCALA	AR	9.33	84.63	55.21	139.84		197.58	138.03	335.61		10%
ORLANDO	G	8.00	77.75	42.07	119.82		197.38	120.18	317.55		10%
QUINCY		6.00	85.65	46.10	131.75		205.13	115.25	320.38		NONE
ST. CLOUD	G	8.32	80.86	43.75	124.61		205.27	124.98	330.25		8%
STARKE	AR	N/A	75.95	60.46	136.41		230.02	151.15	381.17		10%
TALLAHASSEE	G	6.32	64.80	76.05	140.85		152.52	190.13	342.65		10%
VERO BEACH	G, AR	7.21	83.31	75.51	158.82		197.46	188.78	386.24		10%
WAUCHULA		8.62	85.62	40.27	125.89		201.12	100.68	301.80		10%
WILLISTON		8.00	89.84	50.10	139.94		212.60	125.25	337.85		5%
WINTER PARK		8.34	66.18	58.83	125.01		168.53	162.08	330.61		10%
FL POWER & LIGHT *	G	5.33	50.86	53.51	104.37	110.63	134.63	148.78	283.41	300.41	APPL
GULF POWER *	G	10.00	60.85	57.58	118.43	125.54	137.13	143.95	281.08	297.94	TAXES
PROGRESS ENERGY*	G	8.84	68.13	56.00	124.13	131.58	173.58	155.00	328.58	348.29	ADD
TAMPA ELECTRIC**	G	10.50	53.96	47.99	111.8	118.51	134.15	134.98	293.77	311.40	ADD

*Rates for municipal utilities INCLUDE payment-in-lieu of tax to the city's general fund. Rates for investor-owned utilities DO NOT INCLUDE franchise fee payments. Columns A and B include average 6% franchise fee for IOUs. AR = FMPA All Requirements; G = Generating utility. **Total includes conservation, capacity, environmental and refund credit (if applicable).

COMPARISON OF COMMERCIAL ELECTRIC RATES COMPILED BY FLORIDA MUNICIPAL ELECTRIC ASSOCIATION, INC. - www.publicpower.com

CITY	Non-Demand - 750 KWH			Non-Demand - 1,500 KWH			30 KW - 6,000 KWH			40 KW-10,000 KWH		
	Base Rate (Includes Customer Charge)	Fuel or Cost Adjustment	Total	Base Rate (Includes Customer Charge)	Fuel or Cost Adjustment	Total	Base Rate (Includes Customer Charge)	Fuel or Cost Adjustment	Total	Base Rate (Includes Customer Charge)	Fuel or Cost Adjustment	Total
ALACHUA	74.00	24.38	98.38	140.00	48.75	188.75	546.60	195.00	741.60	836.50	325.00	1,161.50
BARTOW	66.70	56.77	123.47	126.70	113.54	240.24	523.28	454.14	977.42	771.18	756.90	1,528.08
BLOUNTSTOWN	114.70	0.00	114.70	222.40	0.00	222.40	868.59	0.00	868.59	1,442.98	0.00	1,442.98
BUSHNELL	85.30	48.75	134.05	163.19	97.50	260.69	630.55	390.00	1,020.55	1,046.00	650.00	1,696.00
CHATTAHOOCHEE	64.58	26.02	90.60	121.65	52.05	173.70	464.10	208.19	672.29	768.50	346.99	1,115.49
CLEWISTON	89.33	36.52	125.84	164.85	73.04	237.89	639.70	292.14	931.84	1,002.50	486.90	1,489.40
FORT MEADE	80.51	61.50	142.01	143.73	123.00	266.73	523.08	492.00	1,015.08	860.25	820.00	1,680.25
FORT PIERCE	78.57	40.50	119.07	151.30	81.00	232.30	628.74	324.00	952.74	954.00	540.00	1,494.00
GAINESVILLE	62.31	45.75	108.06	109.74	91.50	201.24	503.10	366.00	869.10	659.70	610.00	1,269.70
GREEN COVE SPRINGS	74.25	23.62	97.87	142.50	47.24	189.74	631.00	188.95	819.95	955.00	314.92	1,269.92
HAVANA	68.63	41.80	110.43	131.25	83.60	214.85	507.00	334.38	841.38	841.00	557.30	1,398.30
HOMESTEAD	67.42	36.71	104.13	127.19	73.43	200.62	569.37	293.70	863.07	861.47	489.50	1,350.97
JACKSONVILLE	46.51	41.36	87.87	84.99	82.71	167.70	315.79	330.84	646.63	520.95	551.40	1,072.35
JACKSONVILLE BEACH	61.18	44.88	106.06	116.36	89.76	206.12	447.42	359.04	806.46	741.70	598.40	1,340.10
KEY WEST	106.46	14.63	121.09	205.91	29.25	235.16	802.61	117.00	919.61	1,333.01	195.00	1,528.01
KISSIMMEE	111.80	1.91	113.71	212.52	3.81	216.33	930.94	15.24	946.18	1,425.64	25.40	1,451.04
LAKE WORTH	101.02	6.00	107.02	202.05	12.00	214.05	949.80	48.00	997.80	1,476.00	80.00	1,556.00
LAKELAND	49.89	41.06	90.95	89.79	82.13	171.92	371.16	328.50	699.66	528.61	547.50	1,076.11
LEESBURG	73.00	46.31	119.31	135.59	92.63	228.21	527.67	370.50	898.17	793.12	617.50	1,410.62
MOORE HAVEN	74.43	19.43	93.86	140.35	38.85	179.20	594.80	155.40	750.20	878.50	259.00	1,137.50
MOUNT DORA	86.32	34.33	120.65	154.65	68.66	223.31	509.98	274.64	784.62	794.17	457.73	1,251.90
NEW SMYRNA BEACH	61.92	31.28	93.20	117.80	62.55	180.35	453.05	250.20	703.25	751.05	417.00	1,168.05
NEWBERRY	70.28	41.52	111.80	133.05	83.04	216.09	509.70	332.16	841.86	844.50	553.60	1,274.50
OCALA	68.56	41.41	109.97	124.90	82.82	207.72	504.45	331.26	835.71	758.95	552.10	1,311.05
ORLANDO	64.64	33.63	98.27	119.03	67.26	186.29	456.06	269.04	725.10	660.10	448.40	1,108.50
QUINCY	124.75	35.48	150.23	249.30	69.15	318.45	492.22	386.60	888.82	739.77	621.00	1,360.77
ST. CLOUD	67.23	34.97	102.20	123.79	69.95	193.74	474.30	279.78	754.08	686.50	466.30	1,152.80
STARKE	76.50	45.35	121.85	144.00	90.69	234.69	549.00	362.76	911.76	909.00	604.60	1,600.60
TALLAHASSEE	39.82	57.04	96.85	71.72	114.08	185.80	444.98	456.30	901.28	609.00	760.50	1,369.50
VERO BEACH	66.01	56.63	122.64	123.98	113.27	237.25	513.78	453.06	966.84	793.48	755.10	1,548.58
WAUCHULA	85.10	30.20	115.30	143.60	60.41	204.01	619.10	241.62	860.72	933.80	402.70	1,336.50
WILLISTON	79.04	37.58	116.62	143.07	75.15	218.22						
WINTER PARK	54.90	47.90	102.80	98.79	95.81	194.60	322.53	383.22	705.75	491.23	683.70	1,129.93
FL POWER & LIGHT *	46.61	42.71	89.32	84.73	85.43	170.16	359.75	341.64	701.39	502.35	569.40	1,071.75
GULF POWER *	56.17	43.19	99.36	99.34	86.37	185.71	345.08	345.48	690.56	497.60	575.80	1,073.40
PROGRESS ENERGY*	56.92	44.50	101.42	102.16	89.00	191.15	329.51	355.98	685.49	500.59	593.30	1,093.89
TAMPA ELECTRIC**	45.72	38.62	91.51	80.84	77.24	172.51	292.26	308.94	658.50	480.10	514.90	1,090.50

*Rates for municipal utilities INCLUDE payment-in-lieu of tax to the city's general fund. Rates for investor-owned utilities DO NOT INCLUDE franchise fee payments, which average 6% across Florida. AR = FMPA All Requirements: G = Generating utility. **Total includes conservation, capacity, environmental and refund credit (if applicable).

COMPARISON OF COMMERCIAL ELECTRIC RATES COMPILED BY FLORIDA MUNICIPAL ELECTRIC ASSOCIATION, INC. - www.publicpower.com

CITY	75 KW - 15,000 KWH			75 KW - 30,000 KWH			150 KW - 30,000 KWH			150 KW - 60,000 KWH		
	Base Rate (Includes Customer Charge)	Fuel or Cost Adjustment	Total	Base Rate (Includes Customer Charge)	Fuel or Cost Adjustment	Total	Base Rate (Includes Customer Charge)	Fuel or Cost Adjustment	Total	Base Rate (Includes Customer Charge)	Fuel or Cost Adjustment	Total
ALACHUA	1,332.75	487.50	1,820.25	2,196.75	975.00	3,171.75	2,643.00	975.00	3,618.00	4,371.00	1,950.00	6,321.00
BARTOW	1,279.73	1,135.35	2,415.08	1,878.23	2,270.70	4,148.93	2,540.48	2,270.70	4,811.18	3,737.48	4,541.40	8,278.88
BLOUNTSTOWN												
BUSHNELL	1,684.70	975.00	2,659.70	2,787.95	1,950.00	4,737.95	3,346.70	1,950.00	5,296.70	5,553.20	3,900.00	9,453.20
CHATTAHOOCHEE	1,149.00	520.49	1,669.49	2,290.50	1,040.97	3,331.47	2,606.03	1,040.97	3,647.00	4,457.03	2,081.94	6,538.97
CLEWISTON	1,537.00	730.35	2,267.35	2,762.50	1,460.70	4,223.20	3,032.50	1,460.70	4,493.20	5,483.50	2,921.40	8,404.90
FORT MEADE	1,281.78	1,230.00	2,511.78	2,404.10	2,460.00	4,864.10	3,110.60	2,460.00	5,570.60	4,718.60	4,920.00	9,638.60
FORT PIERCE	1,512.90	810.00	2,322.90	2,478.75	1,620.00	4,098.75	2,986.50	1,620.00	4,606.50	4,918.20	3,240.00	8,158.20
GAINESVILLE	1,236.16	915.00	2,151.16	1,632.62	1,830.00	3,462.62	2,211.32	1,830.00	4,041.32	3,004.24	3,660.00	6,664.24
GREEN COVE SPRINGS	1,540.00	472.38	2,012.38	2,455.00	944.76	3,399.76	3,055.00	944.76	3,999.76	4,885.00	1,889.52	6,774.52
HAVANA	1,258.50	835.95	2,094.45	2,511.00	1,671.90	4,182.90	2,511.00	1,671.90	4,182.90	5,016.00	3,343.80	8,359.80
HOMESTEAD	1,369.92	734.25	2,104.17	2,226.42	1,468.50	3,694.92	2,704.17	1,468.50	4,172.67	4,417.17	2,937.00	7,354.17
JACKSONVILLE	995.05	827.10	1,822.15	1,391.35	1,654.20	3,045.55	1,920.10	1,654.20	3,574.30	2,712.70	3,308.40	6,021.10
JACKSONVILLE BEACH	1,542.80	897.60	2,440.40	2,431.85	1,795.20	4,227.05	3,069.35	1,795.20	4,864.55	4,847.45	3,590.40	8,437.85
KEY WEST	2,128.96	292.50	2,421.46	3,730.96	585.00	4,315.96	4,237.96	585.00	4,822.96	7,441.96	1,170.00	8,611.96
KISSIMMEE	2,244.04	38.10	2,282.14	3,765.79	76.20	3,841.99	4,432.54	76.20	4,508.74	7,476.04	152.40	7,628.44
LAKE WORTH												
LAKELAND	882.91	821.25	1,704.16	1,210.82	1,642.50	2,853.32	1,735.82	1,642.50	3,378.32	2,391.64	3,285.00	5,676.64
LEESBURG	1,315.27	926.25	2,241.52	1,925.17	1,852.50	3,777.67	2,608.42	1,852.50	4,460.92	3,828.22	3,705.00	7,533.22
MOORE HAVEN	1,436.75	388.50	1,825.25	2,161.25	777.00	2,938.25	2,840.00	777.00	3,617.00	4,289.00	1,554.00	5,843.00
MOUNT DORA	1,247.96	686.60	1,934.56	2,149.41	1,373.19	3,522.60	2,477.91	1,373.19	3,851.10	4,280.82	2,746.38	7,027.20
NEW SMYRNA BEACH	1,514.75	625.50	2,140.25	2,489.75	1,251.00	3,740.75	2,996.00	1,251.00	4,247.00	4,946.00	2,502.00	7,448.00
NEWBERRY	1,384.50	830.40	2,214.90	2,004.00	1,660.80	3,664.80	2,754.00	1,660.80	4,414.80	3,993.00	3,321.60	7,314.60
OCALA	1,246.04	828.15	2,074.19	1,912.49	1,656.30	3,568.79	2,509.78	1,656.30	4,163.08	3,810.88	3,312.60	7,123.48
ORLANDO	1,095.15	672.60	1,767.75	1,560.30	1,345.20	2,905.50	2,160.30	1,345.20	3,505.50	3,090.60	2,690.40	5,781.00
QUINCY	1,206.75	991.50	2,198.25	2,113.50	1,683.00	3,896.50	2,413.50	1,983.00	4,396.50	4,227.00	3,366.00	7,593.00
ST. CLOUD	1,138.95	699.45	1,838.40	1,622.70	1,398.90	3,021.60	2,246.70	1,398.90	3,645.60	3,214.20	2,797.80	6,012.00
STARKE	1,395.00	906.90	2,301.90	2,709.00	1,813.80	4,522.80	2,709.00	1,813.80	4,522.80	5,409.00	3,627.60	9,036.60
TALLAHASSEE	1,033.40	1,140.75	2,174.15	1,282.85	2,281.50	3,564.35	2,014.10	2,281.50	4,295.60	2,513.00	4,563.00	7,076.00
VERO BEACH	1,228.83	1,132.65	2,361.48	2,134.83	2,265.30	4,400.13	2,420.58	2,265.30	4,685.88	4,232.58	4,530.60	8,763.18
WAUCHULA	1,450.25	604.05	2,054.30	2,425.25	1,208.10	3,633.35	2,835.50	1,208.10	4,043.60	4,785.50	2,416.20	7,201.70
WILLISTON												
WINTER PARK	789.63	958.05	1,747.68	1,276.38	1,916.10	3,192.48	1,568.13	1,916.10	3,484.23	2,541.63	3,832.20	6,373.83
FL POWER & LIGHT *	849.80	854.10	1,703.90	1,102.55	1,708.20	2,810.75	1,666.55	1,708.20	3,374.75	2,172.05	3,416.40	5,588.45
GULF POWER *	810.20	863.70	1,673.90	1,178.90	1,727.40	2,906.30	1,585.40	1,727.40	3,312.80	2,322.80	3,454.80	5,777.60
PROGRESS ENERGY*	806.24	889.95	1,696.19	1,294.79	1,779.90	3,074.69	1,600.79	1,779.90	3,380.69	2,577.89	3,559.80	6,137.69
TAMPA ELECTRIC**	902.25	772.35	1,795.80	1,128.15	1,544.70	2,924.25	1,747.50	1,544.70	3,534.60	2,199.30	3,089.40	5,791.50

*Rates for municipal utilities INCLUDE payment-in-lieu of tax to the city's general fund. Rates for investor-owned utilities DO NOT INCLUDE franchise fee payments, which average 6% across Florida. AR = FMPA All Requirements; G = Generating utility. **Total includes conservation, capacity, environmental and refund credit (if applicable).

COMPARISON OF COMMERCIAL/INDUSTRIAL ELECTRIC RATES COMPILED BY FLORIDA MUNICIPAL ELECTRIC ASSOCIATION, INC. - www.publicpower.com

CITY	300 KW - 60,000 KWH			300 KW - 120,000 KWH			500 KW - 100,000 KWH			500 KW - 200,000 KWH			Additional Tax
	Base Rate (Includes Customer Charge)	Fuel or Cost Adjustment	Total	Base Rate (Includes Customer Charge)	Fuel or Cost Adjustment	Total	Base Rate (Includes Customer Charge)	Fuel or Cost Adjustment	Total	Base Rate (Includes Customer Charge)	Fuel or Cost Adjustment	Total	
ALACHUA	5,263.50	1,950.00	7,213.50	8,719.50	3,900.00	12,619.50	8,758.50	3,250.00	12,008.50	17,492.50	6,500.00	23,992.50	0%
BARTOW	5,061.98	4,541.40	9,603.38	7,455.98	9,082.80	16,538.78	8,423.98	7,569.00	15,992.98	12,413.98	15,138.00	27,551.98	0%
BLOUNTSTOWN													0%
BUSHNELL	6,670.70	3,900.00	10,570.70	11,083.70	7,800.00	18,883.70	11,102.70	6,500.00	17,602.70	18,457.70	13,000.00	31,457.70	0%
CHATTAHOOCHEE	5,210.60	2,081.94	7,292.54	8,912.60	693.98	9,606.58	8,682.10	3,469.90	12,152.00	14,852.10	6,939.80	21,791.90	0%
CLEWISTON	6,023.50	2,921.40	8,944.90	10,925.50	5,842.80	16,768.30	10,011.50	4,869.00	14,880.50	18,181.50	9,738.00	27,919.50	0%
FORT MEADE	6,131.60	4,920.00	11,051.60	9,347.60	9,840.00	19,187.60	10,159.60	8,200.00	18,359.60	15,519.60	16,400.00	31,919.60	0%
FORT PIERCE	5,933.70	3,240.00	9,173.70	9,797.10	6,480.00	16,277.10	9,863.30	5,400.00	15,263.30	16,302.30	10,800.00	27,102.30	0%
GAINESVILLE	4,161.65	3,660.00	7,821.65	5,747.48	7,320.00	13,067.48	6,762.08	6,100.00	12,862.08	9,405.14	12,200.00	21,605.14	0%
GREEN COVE SPRINGS	6,085.00	1,889.52	7,974.52	9,745.00	3,779.04	13,524.04	10,125.00	3,149.20	13,274.20	16,225.00	6,298.40	22,523.40	0%
HAVANA	5,016.00	3,343.80	8,359.80	10,026.00	6,687.60	16,713.60	8,356.00	5,573.00	13,929.00	16,706.00	11,146.00	27,852.00	0%
HOMESTEAD	5,372.67	2,937.00	8,309.67	8,798.67	5,874.00	14,672.67	8,930.67	4,895.00	13,825.67	14,640.67	9,790.00	24,430.67	0%
JACKSONVILLE	3,770.20	3,308.40	7,078.60	5,355.40	6,616.80	11,972.20	6,237.00	5,514.00	11,751.00	8,879.00	11,028.00	19,907.00	0%
JACKSONVILLE BEACH	6,122.45	3,590.40	9,712.85	9,678.65	7,180.80	16,859.45	10,193.25	5,984.00	16,177.25	16,120.25	11,968.00	28,088.25	0%
KEY WEST	8,455.96	1,170.00	9,625.96	14,863.96	2,340.00	17,203.96	14,079.96	1,950.00	16,029.96	24,759.96	3,900.00	28,659.96	0%
KISSIMMEE	8,809.54	152.40	8,961.94	14,896.54	304.80	15,201.34	15,446.12	254.00	15,700.12	24,755.12	508.00	25,263.12	0%
LAKE WORTH													0%
LAKELAND	3,441.64	3,285.00	6,726.64	4,753.28	6,570.00	11,323.28	5,910.07	5,475.00	11,385.07	7,865.14	10,950.00	18,815.14	0%
LEESBURG	5,194.72	3,705.00	8,899.72	7,634.32	7,410.00	15,044.32	8,643.12	6,175.00	14,818.12	12,709.12	12,350.00	25,059.12	0%
MOORE HAVEN	5,646.50	1,554.00	7,200.50	8,544.50	3,108.00	11,652.50	9,388.50	2,590.00	11,978.50	14,218.50	5,180.00	19,398.50	0%
MOUNT DORA	4,937.82	2,746.38	7,684.20	8,543.64	5,492.76	14,036.40	8,217.70	4,577.30	12,795.00	14,227.40	9,154.60	23,382.00	0%
NEW SMYRNA BEACH	5,583.50	2,502.00	8,085.50	9,183.50	5,004.00	14,187.50	9,283.50	4,170.00	13,453.50	15,283.50	8,340.00	23,623.50	0%
NEWBERRY	5,085.00	3,321.60	8,406.60	7,425.00	6,643.20	12,585.00	8,445.00	5,536.00	13,981.00	12,345.00	11,072.00	23,417.00	0%
OCALA	5,036.90	3,312.60	8,349.50	7,637.30	6,625.20	14,262.50	8,705.45	5,521.00	14,226.45	13,118.45	11,042.00	24,160.45	0%
ORLANDO	4,290.60	2,690.40	6,981.00	6,151.20	5,380.80	11,532.00	7,131.00	4,484.00	11,615.00	10,232.00	8,968.00	19,200.00	0%
QUINCY	4,827.00	3,966.00	8,526.00	8,454.00	6,732.00	15,186.00	8,045.00	6,610.00	14,644.00	14,090.00	11,220.00	25,210.00	0%
ST. CLOUD	4,462.20	2,797.80	7,260.00	6,397.20	5,595.60	11,992.80	7,416.20	4,663.00	12,079.20	10,641.20	9,326.00	19,967.20	0%
STARKE	5,409.00	3,627.60	9,036.60	10,809.00	7,255.20	18,064.20	9,009.00	6,046.00	15,055.00	18,009.00	12,092.00	30,101.00	0%
TALLAHASSEE	3,975.50	4,563.00	8,538.50	4,973.30	9,126.00	14,099.30	6,548.70	7,605.00	14,153.70	8,169.70	15,210.00	23,379.70	0%
VERO BEACH	4,804.08	4,530.60	9,334.68	8,428.08	9,061.20	17,489.28	7,982.08	7,551.00	15,533.08	14,022.08	15,102.00	29,124.08	0%
WAUCHULA	5,605.00	2,416.20	8,022.20	9,506.00	4,832.40	14,338.40	9,300.00	4,027.00	13,327.00	15,800.00	8,054.00	23,854.00	0%
WILLISTON													0%
WINTER PARK	3,125.13	3,832.20	6,957.33	5,072.13	7,664.40	12,736.53	5,130.40	6,323.13	11,453.53	8,342.95	12,646.26	20,989.21	0%
FL POWER & LIGHT *	3,300.05	3,416.40	6,716.45	4,311.05	6,832.80	11,143.85	5,897.72	5,689.00	11,586.72	7,281.72	11,378.00	18,659.72	0%
GULF POWER *	3,135.80	3,454.80	6,590.60	4,610.60	6,909.60	11,520.20	6,204.00	5,664.00	11,868.00	7,878.00	11,328.00	19,206.00	0%
PROGRESS ENERGY*	3,189.89	3,559.80	6,749.69	5,144.09	7,119.60	12,263.69	5,233.18	5,874.00	11,107.18	8,457.38	11,748.00	20,205.38	0%
TAMPA ELECTRIC**	3,438.00	3,089.40	7,012.20	4,341.60	6,178.80	11,526.00	5,692.00	5,149.00	11,649.00	7,198.00	10,298.00	19,172.00	0%

*Rates for municipal utilities INCLUDE payment-in-lieu of tax to the city's general fund. Rates for investor-owned utilities DO NOT INCLUDE franchise fee payments, which average 6% across Florida. AR = FMPA All Requirements: G = Generating utility. **Total includes conservation, capacity, environmental and refund credit (if applicable).