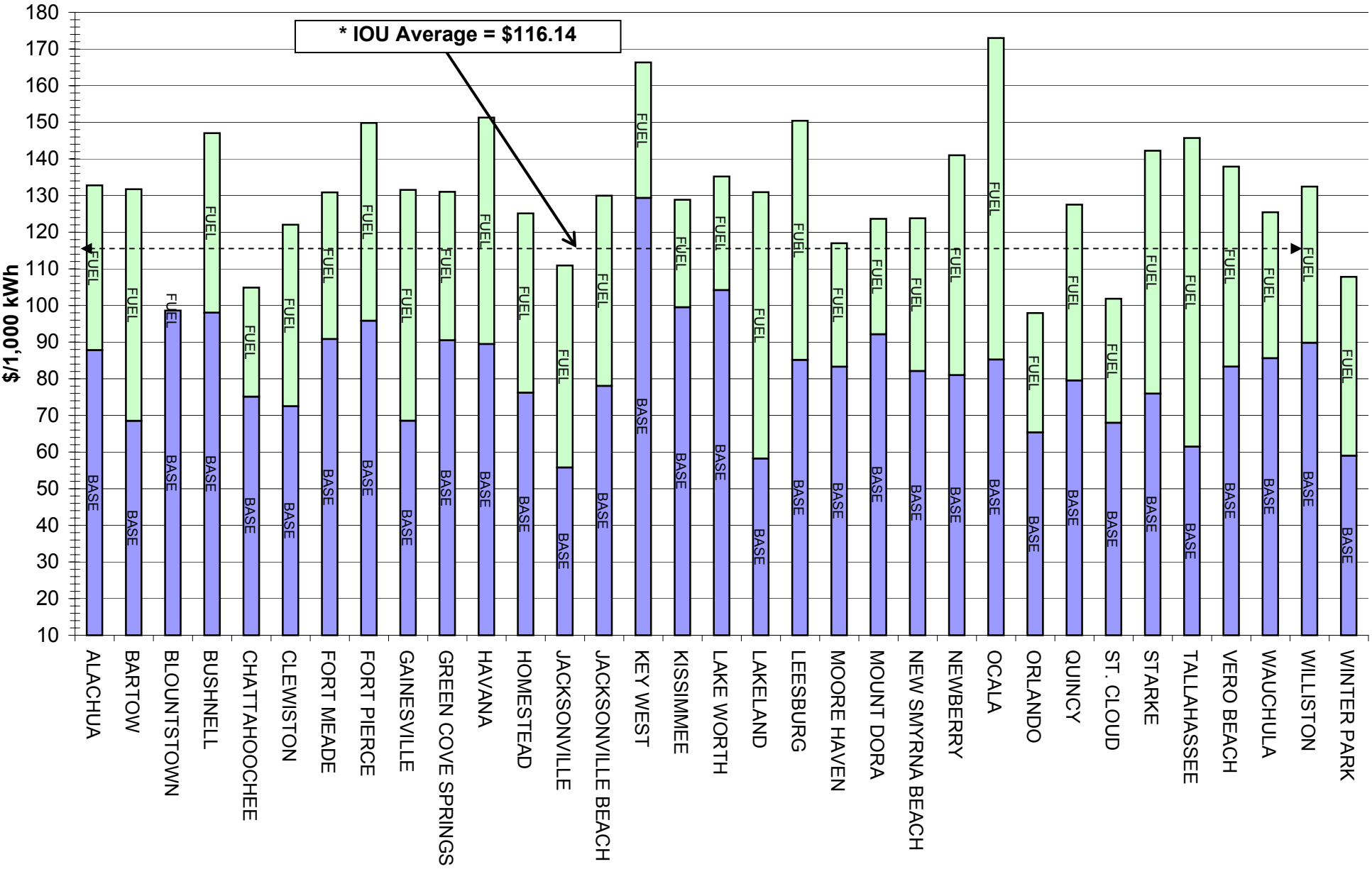


# Residential Bill Comparison, September 2008



\* Includes average 6% franchise fee.

**COMPARISON OF RESIDENTIAL ELECTRIC RATES COMPILED BY FLORIDA MUNICIPAL ELECTRIC ASSOCIATION, INC. - www.publicpower.com**

September 2008			750 KWH			1,000 KWH			2,500 KWH			
CITY		Customer Charge	Base Rate (Includes Customer Charge)	Fuel or Cost Adjustment	Total	Base Rate (Includes Customer Charge)	Fuel or Cost Adjustment	Total	Base Rate (Includes Customer Charge)	Fuel or Cost Adjustment	Total	Additional Tax
ALACHUA		8.00	67.85	33.75	101.60	87.80	45.00	132.80	207.50	112.50	320.00	10%
BARTOW		6.70	53.07	47.42	100.49	68.52	63.23	131.75	161.25	158.08	319.33	10%
BLOUNTSTOWN		3.50	73.96	0.00	73.96	98.62	0.00	98.62	246.54	0.00	246.54	5%
BUSHNELL	AR	7.40	75.39	36.75	112.14	98.05	49.00	147.05	234.03	122.50	356.53	10%
CHATTAHOOCHEE		6.50	57.95	22.33	80.28	75.10	29.78	104.88	178.00	74.44	252.44	NONE
CLEWISTON	AR	6.50	56.00	37.16	93.16	72.50	49.54	122.04	171.75	123.85	295.60	10%
FORT MEADE	AR	12.96	71.39	30.00	101.39	90.86	40.00	130.86	207.71	100.00	307.71	10%
FORT PIERCE	G, AR	6.01	71.43	40.50	111.93	95.84	54.00	149.84	242.30	135.00	377.30	10%
GAINESVILLE	G	5.54	44.29	47.25	91.54	68.54	63.00	131.54	214.04	157.50	371.54	10%
GREEN COVE SPRINGS	AR	6.00	68.75	30.40	99.15	90.50	40.53	131.03	221.00	101.32	322.32	NONE
HAVANA	AR	6.00	68.63	46.33	114.96	89.50	61.77	151.27	214.75	154.43	369.18	NONE
HOMESTEAD	G	5.50	58.53	36.71	95.24	76.20	48.95	125.15	182.25	122.38	304.63	10%
JACKSONVILLE	G	5.50	43.22	41.36	84.58	55.79	55.14	110.93	131.23	137.85	269.08	10%
JACKSONVILLE BEACH	AR	4.50	59.68	38.93	98.61	78.07	51.90	129.97	188.43	129.75	318.18	NONE
KEY WEST	G, AR	6.24	98.57	27.75	126.32	129.34	37.00	166.34	313.99	92.50	406.49	NONE
KISSIMMEE	G, AR	10.17	77.18	22.01	99.19	99.51	29.34	128.85	265.15	73.35	338.50	8%
LAKE WORTH	G, AR	8.25	78.15	23.25	101.40	104.20	31.00	135.20	260.50	77.50	338.00	10%
LAKELAND	G	8.00	45.68	54.53	100.21	58.23	72.70	130.93	146.08	181.75	327.83	10%
LEESBURG	AR	10.21	66.42	48.94	115.36	85.16	65.25	150.41	197.59	163.12	360.71	10%
MOORE HAVEN		8.50	64.60	25.28	89.88	83.30	33.70	117.00	195.50	84.25	279.75	10%
MOUNT DORA		5.80	70.56	23.63	94.19	92.14	31.50	123.64	221.66	78.75	300.41	10%
NEW SMYRNA BEACH	G	5.65	62.98	31.28	94.26	82.10	41.70	123.80	196.77	104.25	301.02	9.25%
NEWBERRY	AR	7.50	62.63	45.00	107.63	81.00	60.00	141.00	191.25	150.00	341.25	10%
OCALA	AR	9.36	66.27	65.82	132.09	85.25	87.76	173.01	199.08	219.40	418.48	10%
ORLANDO	G	7.00	50.78	24.44	75.21	65.37	32.58	97.95	167.93	96.45	264.38	10%
QUINCY		6.00	61.15	36.00	97.15	79.53	48.00	127.53	189.81	120.00	309.81	NONE
ST. CLOUD	G	7.28	52.81	25.41	78.22	67.98	33.88	101.86	174.63	100.30	274.93	8%
STARKE	AR	N/A	58.58	49.73	108.31	75.95	66.30	142.25	230.02	165.75	395.77	10%
TALLAHASSEE	G	6.00	47.61	63.18	110.79	61.48	84.24	145.72	144.70	210.60	355.30	10%
VERO BEACH	G, AR	7.21	64.29	40.94	105.23	83.31	54.59	137.90	197.46	136.48	333.94	10%
WAUCHULA		8.62	66.37	29.87	96.24	85.62	39.82	125.44	201.12	99.55	300.67	10%
WILLISTON		8.00	69.38	31.95	101.33	89.84	42.60	132.44	212.60	106.50	319.10	5%
WINTER PARK		8.03	46.27	36.61	82.88	59.02	48.81	107.83	150.51	137.03	287.54	10%
FL POWER & LIGHT *	G	5.34	37.18	45.16	82.34	47.79	60.21	108.00	126.96	165.53	292.49	APPL
GULF POWER *	G	10.00	47.43	38.25	85.68	59.91	51.00	110.91	134.78	127.50	262.28	TAXES
PROGRESS ENERGY*	G	8.03	46.27	36.61	82.88	59.02	48.81	107.83	150.51	137.03	287.53	ADD
TAMPA ELECTRIC**	G	8.50	41.07	39.31	85.78	51.92	52.41	111.52	117.05	131.03	266.06	ADD

\*Rates for municipal utilities INCLUDE payment-in-lieu of tax to the city's general fund. Rates for investor-owned utilities DO NOT INCLUDE franchise fee payments, which average 6% across Florida. AR = FMPA All Requirements; G = Generating utility. \*\*Total includes conservation, capacity, environmental and refund credit (if applicable).

**COMPARISON OF COMMERCIAL ELECTRIC RATES COMPILED BY FLORIDA MUNICIPAL ELECTRIC ASSOCIATION, INC. - [www.publicpower.com](http://www.publicpower.com)**

CITY	Non-Demand - 750 KWH			Non-Demand - 1,500 KWH			30 KW - 6,000 KWH			40 KW-10,000 KWH		
	Base Rate (Includes Customer Charge)	Fuel or Cost Adjustment	Total	Base Rate (Includes Customer Charge)	Fuel or Cost Adjustment	Total	Base Rate (Includes Customer Charge)	Fuel or Cost Adjustment	Total	Base Rate (Includes Customer Charge)	Fuel or Cost Adjustment	Total
ALACHUA	74.00	33.75	107.75	140.00	67.50	207.50	546.60	270.00	816.60	836.50	450.00	1,286.50
BARTOW	66.70	47.42	114.12	126.70	94.85	221.55	523.28	379.38	902.66	771.18	632.30	1,403.48
BLOUNTSTOWN	82.85	0.00	82.85	165.69	0.00	165.69	662.76	0.00	662.76	1,104.60	0.00	1,104.60
BUSHNELL	85.30	36.75	122.05	163.19	73.50	236.69	630.55	294.00	924.55	1,046.00	490.00	1,536.00
CHATTAHOOCHEE	64.58	22.33	86.91	121.65	44.66	166.31	464.10	178.65	642.75	768.50	297.75	1,066.25
CLEWISTON	67.30	37.16	104.46	127.30	74.31	201.61	509.00	297.24	806.24	789.00	495.40	1,284.40
FORT MEADE	80.51	30.00	110.51	143.73	60.00	203.73	523.08	240.00	763.08	860.25	400.00	1,260.25
FORT PIERCE	78.57	40.50	119.07	151.30	81.00	232.30	628.74	324.00	952.74	954.00	540.00	1,494.00
GAINESVILLE	58.12	47.25	105.37	101.37	94.50	195.87	186.30	378.00	564.30	290.70	630.00	920.70
GREEN COVE SPRINGS	74.25	30.40	104.65	142.50	60.79	203.29	631.00	243.17	874.17	955.00	405.29	1,360.29
HAVANA	68.63	46.33	114.96	131.25	92.66	223.91	507.00	370.62	877.62	841.00	617.70	1,458.70
HOMESTEAD	66.15	36.71	102.86	124.80	73.43	198.23	558.50	293.70	852.20	845.00	489.50	1,334.50
JACKSONVILLE	42.27	41.36	83.63	77.23	82.71	159.94	287.02	330.84	617.86	473.50	551.40	1,024.90
JACKSONVILLE BEACH	61.18	38.93	100.11	116.36	77.85	194.21	447.42	311.40	758.82	741.70	519.00	1,260.70
KEY WEST	102.61	27.75	130.36	198.46	55.50	253.96	773.56	222.00	995.56	1,284.76	370.00	1,654.76
KISSIMMEE	86.48	22.01	108.49	161.88	44.01	205.89	728.38	176.04	904.42	1,088.04	293.40	1,381.44
LAKE WORTH	87.45	23.50	110.95	174.90	46.50	221.40	699.60	186.00	885.60	1,166.00	310.00	1,476.00
LAKELAND	49.70	54.53	104.23	89.40	109.05	198.45	369.60	436.20	805.80	526.01	727.00	1,253.01
LEESBURG	71.60	48.94	120.54	132.99	97.88	230.87	528.87	391.50	920.37	777.69	652.50	1,430.19
MOORE HAVEN	74.43	25.28	99.71	140.35	50.55	190.90	594.80	202.20	797.00	878.50	337.00	1,215.50
MOUNT DORA	81.61	23.63	105.24	146.36	47.25	193.61	491.39	189.00	680.39	749.37	315.00	1,064.37
NEW SMYRNA BEACH	61.92	31.28	93.20	117.80	62.55	180.35	453.05	250.20	703.25	751.05	417.00	1,168.05
NEWBERRY	70.28	45.00	115.28	133.05	90.00	223.05	509.70	360.00	869.70	844.50	600.00	1,274.50
OCALA	69.00	65.82	134.82	125.75	131.64	257.39	507.83	526.56	1,034.39	764.45	877.60	1,642.05
ORLANDO	53.86	26.51	80.37	99.71	53.03	152.74	377.46	215.82	593.28	554.10	359.70	913.80
QUINCY	71.29	36.00	143.29	126.26	72.00	198.26	411.05	288.00	699.05	617.77	480.00	1,097.77
ST. CLOUD	56.01	27.57	83.58	103.71	55.14	158.85	392.58	224.46	617.04	576.30	374.10	950.40
STARKE	76.50	49.73	126.23	144.00	99.45	243.45	549.00	397.80	946.80	909.00	663.00	1,572.00
TALLAHASSEE	37.77	63.18	100.95	68.04	126.36	194.40	422.18	505.44	927.62	577.80	842.40	1,420.20
VERO BEACH	66.01	40.94	106.95	123.98	81.89	205.87	513.78	327.54	841.32	793.48	545.90	1,339.38
WAUCHULA	85.10	29.87	114.97	143.60	59.73	203.33	619.10	238.92	858.02	933.80	398.20	1,332.00
WILLISTON	79.04	31.95	110.99	143.07	63.90	206.97						
WINTER PARK	49.76	39.10	88.86	88.91	78.22	167.13	285.36	312.84	598.20	431.42	521.40	952.82
FL POWER & LIGHT *	44.08	47.69	91.77	79.65	95.37	175.02	332.86	381.48	714.34	465.40	635.80	1,101.20
GULF POWER *	55.47	38.25	93.72	97.95	76.50	174.45	338.30	306.00	644.30	486.30	510.00	996.30
PROGRESS ENERGY*	49.77	39.11	88.87	88.91	78.21	167.12	285.36	312.84	598.20	431.42	521.40	952.82
TAMPA ELECTRIC**	41.07	39.31	85.59	73.63	78.62	162.68	269.02	314.46	625.18	442.70	524.10	1,036.30

\*Rates for municipal utilities INCLUDE payment-in-lieu of tax to the city's general fund. Rates for investor-owned utilities DO NOT INCLUDE franchise fee payments, which average 6% across Florida. AR = FMPA All Requirements: G = Generating utility. \*\*Total includes conservation, capacity, environmental and refund credit (if applicable).

**COMPARISON OF COMMERCIAL ELECTRIC RATES COMPILED BY FLORIDA MUNICIPAL ELECTRIC ASSOCIATION, INC. - [www.publicpower.com](http://www.publicpower.com)**

CITY	75 KW - 15,000 KWH			75 KW - 30,000 KWH			150 KW - 30,000 KWH			150 KW - 60,000 KWH		
	Base Rate (Includes Customer Charge)	Fuel or Cost Adjustment	Total	Base Rate (Includes Customer Charge)	Fuel or Cost Adjustment	Total	Base Rate (Includes Customer Charge)	Fuel or Cost Adjustment	Total	Base Rate (Includes Customer Charge)	Fuel or Cost Adjustment	Total
ALACHUA	1,332.75	217.50	1,550.25	2,196.75	1,350.00	3,546.75	2,643.00	1,350.00	3,993.00	4,371.00	2,700.00	7,071.00
BARTOW	1,279.73	948.45	2,228.18	1,878.23	1,896.90	3,775.13	2,540.48	1,896.90	4,437.38	3,737.48	3,793.80	7,531.28
BLOUNTSTOWN	1,656.90	0.00	1,656.90	3,313.80	0.00	3,313.80	3,313.80	0.00	3,313.80	6,627.60	0.00	6,627.60
BUSHNELL	1,684.70	735.00	2,419.70	2,787.95	1,470.00	4,257.95	3,346.70	1,470.00	4,816.70	5,553.20	2,940.00	8,493.20
CHATTAHOOCHEE	1,149.00	446.63	1,595.63	2,290.50	893.25	3,183.75	2,606.03	893.25	3,499.28	4,457.03	1,786.50	6,243.53
CLEWISTON	1,220.00	743.10	1,963.10	2,135.00	1,486.20	3,621.20	2,405.00	1,486.20	3,891.20	4,235.00	2,972.40	7,207.40
FORT MEADE	1,281.78	600.00	1,881.78	2,404.10	1,200.00	3,604.10	3,110.60	1,200.00	4,310.60	4,718.60	2,400.00	7,118.60
FORT PIERCE	1,512.90	810.00	2,322.90	2,478.75	1,620.00	4,098.75	2,986.50	1,620.00	4,606.50	4,918.20	3,240.00	8,158.20
GAINESVILLE	1,028.70	945.00	1,973.70	1,420.20	1,890.00	3,310.20	2,027.70	1,890.00	3,917.70	2,810.70	3,780.00	6,590.70
GREEN COVE SPRINGS	1,540.00	607.94	2,147.94	2,455.00	1,215.87	3,670.87	3,055.00	1,215.87	4,270.87	4,885.00	2,431.74	7,316.74
HAVANA	1,258.50	926.55	2,185.05	2,511.00	1,853.10	4,364.10	2,511.00	1,853.10	4,364.10	5,016.00	3,706.20	8,722.20
HOMESTEAD	1,343.75	734.25	2,078.00	2,183.75	1,468.50	3,652.25	2,652.50	1,468.50	4,121.00	4,332.50	2,937.00	7,269.50
JACKSONVILLE	869.70	827.10	1,696.80	1,217.40	1,654.20	2,871.60	1,679.40	1,654.20	3,333.60	2,374.80	3,308.40	5,683.20
JACKSONVILLE BEACH	1,542.80	778.50	2,321.30	2,431.85	1,557.00	3,988.85	3,069.35	1,557.00	4,626.35	4,847.45	3,114.00	7,961.45
KEY WEST	2,065.99	555.00	2,620.99	3,609.49	1,110.00	4,719.49	4,112.74	1,110.00	5,222.74	7,199.74	2,220.00	9,419.74
KISSIMMEE	1,737.64	440.10	2,177.74	2,752.99	880.20	3,633.19	3,419.74	880.20	4,299.94	5,450.44	1,760.40	7,210.84
LAKE WORTH												
LAKELAND	879.01	1,090.60	1,969.61	1,203.02	2,181.00	3,384.02	1,728.02	2,181.00	3,909.02	2,376.04	4,362.00	6,738.04
LEESBURG	1,289.64	978.80	2,268.44	1,887.84	1,957.50	3,845.34	2,557.59	1,957.50	4,515.09	3,741.23	3,915.00	7,656.23
MOORE HAVEN	1,436.75	505.50	1,942.25	2,161.25	1,011.00	3,172.25	2,840.00	1,011.00	3,851.00	4,289.00	2,022.00	6,311.00
MOUNT DORA	1,202.34	472.50	1,674.84	1,952.25	945.00	2,897.25	2,387.25	945.00	3,332.25	3,887.07	1,890.00	5,777.07
NEW SMYRNA BEACH	1,514.75	625.50	2,140.25	2,489.75	1,251.00	3,740.75	2,996.00	1,251.00	4,247.00	4,946.00	2,502.00	7,448.00
NEWBERRY	1,384.50	900.00	2,284.50	2,004.00	1,800.00	3,804.00	2,754.00	1,800.00	4,554.00	3,993.00	3,600.00	7,593.00
OCALA	1,254.35	1,316.40	2,570.75	1,928.24	2,632.80	4,561.04	2,523.69	2,632.80	5,156.49	3,842.97	5,265.60	9,108.57
ORLANDO	921.15	539.55	1,460.70	1,339.80	1,079.10	2,418.90	1,827.30	1,079.10	2,906.40	2,664.60	2,158.20	4,822.80
QUINCY	936.93	720.00	1,656.93	1,610.91	1,440.00	3,050.91	1,813.41	1,440.00	3,253.41	3,161.37	2,880.00	6,041.37
ST. CLOUD	958.05	561.15	1,519.20	1,393.50	1,122.30	2,515.80	1,900.50	1,122.30	3,022.80	2,771.40	2,244.60	5,016.00
STARKE	1,395.00	994.50	2,389.50	2,709.00	1,989.00	4,698.00	2,709.00	1,989.00	4,698.00	5,409.00	3,978.00	9,387.00
TALLAHASSEE	980.45	1,263.60	2,244.05	1,217.15	2,527.20	3,744.35	1,910.90	2,527.20	4,438.10	2,384.30	5,054.40	7,438.70
VERO BEACH	1,228.83	818.85	2,047.68	2,134.83	1,637.70	3,772.53	2,420.58	1,637.70	4,058.28	4,232.58	3,275.40	7,507.98
WAUCHULA	1,450.25	597.30	2,047.55	2,425.25	1,194.60	3,619.85	2,835.50	1,194.60	4,030.10	4,785.50	2,389.20	7,174.70
WILLISTON												
WINTER PARK	697.47	782.10	1,479.57	1,106.07	1,564.20	2,670.27	1,384.32	1,564.20	2,948.52	2,201.52	3,128.40	5,329.92
FL POWER & LIGHT *	782.50	953.70	1,736.20	1,027.15	1,907.40	2,934.55	1,531.90	1,907.40	3,439.30	2,021.20	3,814.80	5,836.00
GULF POWER *	793.25	765.00	1,558.25	1,145.00	1,530.00	2,675.00	1,551.50	1,530.00	3,081.50	2,255.00	3,060.00	5,315.00
PROGRESS ENERGY*	697.47	782.10	1,479.57	1,106.07	1,564.20	2,670.27	1,384.32	1,564.20	2,948.52	2,201.52	3,128.40	5,329.92
TAMPA ELECTRIC**	791.25	783.15	1,664.85	996.75	1,566.30	2,743.95	1,540.50	1,566.30	3,287.70	1,951.50	3,132.60	5,445.90

\*Rates for municipal utilities INCLUDE payment-in-lieu of tax to the city's general fund. Rates for investor-owned utilities DO NOT INCLUDE franchise fee payments, which average 6% across Florida. AR = FMPA All Requirements: G = Generating utility. \*\*Total includes conservation, capacity, environmental and refund credit (if applicable).

**COMPARISON OF COMMERCIAL/INDUSTRIAL ELECTRIC RATES COMPILED BY FLORIDA MUNICIPAL ELECTRIC ASSOCIATION, INC. - www.publicpower.com**

CITY	300 KW - 60,000 KWH			300 KW - 120,000 KWH			500 KW - 100,000 KWH			500 KW - 200,000 KWH			Additional Tax
	Base Rate (Includes Customer Charge)	Fuel or Cost Adjustment	Total	Base Rate (Includes Customer Charge)	Fuel or Cost Adjustment	Total	Base Rate (Includes Customer Charge)	Fuel or Cost Adjustment	Total	Base Rate (Includes Customer Charge)	Fuel or Cost Adjustment	Total	
ALACHUA	5,263.50	2,700.00	7,963.50	8,719.50	5,400.00	14,119.50	8,758.50	4,500.00	13,258.50	17,492.50	9,000.00	26,492.50	10%
BARTOW	5,061.98	3,793.80	8,855.78	7,455.98	7,587.60	15,043.58	8,423.98	6,323.00	14,746.98	12,413.98	12,646.00	25,059.98	10%
BLOUNTSTOWN	6,627.60	0.00	6,627.60	13,255.20	0.00	13,255.20	11,046.00	0.00	11,046.00	22,092.00	0.00	22,092.00	5%
BUSHNELL	6,670.70	2,940.00	9,610.70	11,083.70	5,880.00	16,963.70	11,102.70	4,900.00	16,002.70	18,457.70	9,800.00	28,257.70	10%
CHATTAHOOCHEE	5,210.60	1,786.50	6,997.10	8,912.60	595.50	9,508.10	8,682.10	2,977.50	11,659.60	14,852.10	5,955.00	20,807.10	NONE
CLEWISTON	4,775.00	2,972.40	7,747.40	8,435.00	5,944.80	14,379.80	7,935.00	4,954.00	12,889.00	14,035.00	9,908.00	23,943.00	10%
FORT MEADE	6,131.60	2,400.00	8,531.60	9,347.60	4,800.00	14,147.60	10,159.60	4,000.00	14,159.60	15,519.60	8,000.00	23,519.60	10%
FORT PIERCE	5,933.70	3,240.00	9,173.70	9,797.10	6,480.00	16,277.10	9,863.30	5,400.00	15,263.30	16,302.30	10,800.00	27,102.30	10%
GAINESVILLE	4,025.70	3,780.00	7,805.70	5,591.70	7,560.00	13,151.70	6,689.70	6,300.00	12,989.70	9,299.70	12,600.00	21,899.70	10%
GREEN COVE SPRINGS	6,085.00	2,431.74	8,516.74	9,745.00	4,863.48	14,608.48	10,125.00	4,052.90	14,177.90	16,225.00	8,105.80	24,330.80	NONE
HAVANA	5,016.00	3,706.20	8,722.20	10,026.00	7,412.40	17,438.40	8,356.00	6,177.00	14,533.00	16,706.00	12,354.00	29,060.00	NONE
HOMESTEAD	5,270.00	2,937.00	8,207.00	8,630.00	5,874.00	14,504.00	8,760.00	4,895.00	13,655.00	14,360.00	9,790.00	24,150.00	10%
JACKSONVILLE	3,298.80	3,308.40	6,607.20	4,689.60	6,616.80	11,306.40	5,458.00	5,514.00	10,972.00	7,776.00	11,028.00	18,804.00	10%
JACKSONVILLE BEACH	6,122.45	3,114.00	9,236.45	9,678.65	6,228.00	15,906.65	10,193.25	5,190.00	15,383.25	16,120.25	10,380.00	26,500.25	NONE
KEY WEST	8,206.24	2,220.00	10,426.24	14,380.24	4,440.00	18,820.24	13,664.24	3,700.00	17,364.24	23,954.24	7,400.00	31,354.24	NONE
KISSIMMEE	6,783.94	1,760.40	8,544.34	10,845.34	3,520.80	14,366.14	12,069.12	2,934.00	15,003.12	18,001.12	5,868.00	23,869.12	8%
LAKE WORTH													10%
LAKELAND	3,426.04	4,362.00	7,788.04	4,722.08	8,724.00	13,446.08	5,884.07	7,270.00	13,154.07	7,813.14	14,540.00	22,353.14	10%
LEESBURG	5,093.49	3,915.00	9,008.49	7,486.29	7,830.00	15,316.29	8,474.69	6,525.00	14,999.69	12,462.69	13,050.00	25,512.69	10%
MOORE HAVEN	5,646.50	2,022.00	7,668.50	8,544.50	4,044.00	12,588.50	9,388.50	3,370.00	12,758.50	14,218.50	6,740.00	20,958.50	10%
MOUNT DORA	4,757.07	1,890.00	6,647.07	7,756.71	3,780.00	11,536.71	7,916.83	3,150.00	11,066.83	12,916.23	6,300.00	19,216.23	10%
NEW SMYRNA BEACH	5,583.50	2,502.00	8,085.50	9,183.50	5,004.00	14,187.50	9,283.50	4,170.00	13,453.50	15,283.50	8,340.00	23,623.50	9%
NEWBERRY	5,085.00	3,600.00	8,685.00	7,425.00	7,200.00	12,585.00	8,445.00	6,000.00	14,445.00	12,345.00	12,000.00	24,345.00	10%
OCALA	5,070.04	5,265.60	10,335.64	7,700.20	10,531.20	18,231.40	8,763.81	8,776.00	17,539.81	13,229.41	17,552.00	30,781.41	10%
ORLANDO	3,639.60	2,158.20	5,797.80	5,314.20	4,316.40	9,630.60	6,056.00	3,597.00	9,653.00	8,847.00	7,194.00	16,041.00	10%
QUINCY	3,566.37	2,880.00	6,446.37	6,262.29	5,760.00	12,022.29	5,903.65	4,800.00	10,703.65	10,396.85	9,800.00	19,996.85	NONE
ST. CLOUD	3,785.40	2,244.60	6,030.00	5,527.20	4,489.20	10,016.40	6,298.60	3,741.00	10,039.60	9,201.60	7,482.00	16,683.60	8%
STARKE	5,409.00	3,978.00	9,387.00	10,809.00	7,956.00	18,765.00	9,009.00	6,630.00	15,639.00	18,009.00	13,260.00	31,269.00	10%
TALLAHASSEE	3,771.80	5,054.40	8,826.20	4,718.60	10,108.80	14,827.40	6,254.80	8,424.00	14,678.80	7,792.80	16,848.00	24,640.80	10%
VERO BEACH	4,804.08	3,275.40	8,079.48	8,428.08	6,550.80	14,978.88	7,982.08	5,459.00	13,441.08	14,022.08	10,918.00	24,940.08	10%
WAUCHULA	5,606.00	2,389.20	7,995.20	9,506.00	4,778.40	14,284.40	9,300.00	3,982.00	13,282.00	15,800.00	7,964.00	23,764.00	10%
WILLISTON													5%
WINTER PARK	2,758.02	3,128.40	5,886.42	4,392.42	6,256.80	10,649.22	4,523.97	5,161.86	9,685.83	7,230.63	10,323.72	17,554.35	10%
FL POWER & LIGHT *	3,030.70	3,814.80	6,845.50	4,009.30	7,629.60	11,638.90	5,348.78	6,351.00	11,699.78	6,678.78	12,702.00	19,380.78	APPL
GULF POWER *	3,068.00	3,060.00	6,128.00	4,475.00	6,120.00	10,595.00	6,073.00	5,017.00	11,090.00	7,616.00	10,034.00	17,650.00	TAXES
PROGRESS ENERGY*	2,758.02	3,128.40	5,886.42	4,392.42	6,256.80	10,649.22	4,523.06	5,162.00	9,685.06	7,218.91	10,324.00	17,542.91	ADD
TAMPA ELECTRIC**	3,039.00	3,132.60	6,533.40	3,861.00	6,265.20	10,846.80	5,037.00	5,221.00	10,861.00	6,407.00	10,442.00	18,055.00	ADD

\*Rates for municipal utilities INCLUDE payment-in-lieu of tax to the city's general fund. Rates for investor-owned utilities DO NOT INCLUDE franchise fee payments, which average 6% across Florida. AR = FMPA All Requirements: G = Generating utility. \*\*Total includes conservation, capacity, environmental and refund credit (if applicable).